



Company profile

SUB / Supply of cement industry equipment, including equipment (quarries, grinding, transport, rotary kilns, ball mills, packing lines and materials) with Spare part



Good greeting !

Hi-Tech General Trading Company LLC Based in the United Arab Emirates - **Dubai**. It is one of the leading companies in supplying cement industry equipment. It is distinguished by its management by the best experts in the cement industry and it has international relations with major international companies for supplying cement industry equipment, which are:

- 1- Providing equipment for quarries to extract limestone and other rocks.
- 2- We provide drilling and blasting equipment, loading and unloading, transporting, crushing, screening along with dedusting system , rock transportation equipment in suitable sizes to be transported to cement factories.
- 3- Providing transportation equipment, including loading and transport stations (by trains, trucks or conveyor belts), and then equipment for unloading stations.
- 4- Supplying all kind & size for (Jew & hammer crusher) with the spare part in order to prepare the rock and be suitable for feeding to kilns.
- 5- Supply of kiln feeder for wet & dry process kiln.
- 6- Supplying lining materials, including (high, medium and low alumina bricks) and all kind of magnesite bricks)along with all kind of mortars.
- 7- Supplying the fuel system for kilns, whether (gas, oil, or coal), including tanks, pumps, burner, nozzles, control and operation valves).
- 8- Supply of dry & wet process dedusting system.
- 9- Supplying all kinds of conveyor belts, whether resistance (to corrosion, heat and chemicals).
- 10- Supplying all kind of drum & idlers(side, return , rubber and steel) main drum either motorized or not) along with gearbox and motors.
- 11- Supplying all types of (bucket and screw conveyors) and their accessories (bucket, screw etc) along with gearbox and electric motors).

Office Address : # 2016, Metropolis tower, Business Bay, Dubai, United Arab Emirates

Shop Address : Next To Al Ras Hotel , Al Ras Deira , Dubai, United Arab Emirates

Tel: +97142580497 / +97143799927 Fax: +97142580498, Mob: +971547700750

Email : sales@hitechgt.ae / procurement@hitechgt.ae

www.hitechgtr.com



12- Supply of crushers (Jaw, hammer & ball mill) with spare parts & the ball for the ball mill.

13- Supplying All kind of screen & spare part, including (mesh & bearing) of various types and sizes with wet & dry process dedusting system.

14- All kind of cement packing line & packing material, including (polypropylene paper).

15- Supplying the main drive high voltage & low voltage motor & dedusting system for the kiln, whether wet or dry process.

16- Supplying mobile and fixed workshop equipment (CNC machine, laith machine drill & boring machine, etc.).

17- Supply of personal and industrial safety equipment with civil defense systems.

18- Supplying ready-made cement production lines with cement tankers, whether powder (in tankers or specialized trains) with cement concrete mixers and pumps for ready-made cement factories.

All the years of successful supply of many cement industry equipment benefited from the expertise of Raky Yassin wahib (Geologist), who worked in the concentration division of one of the largest manufacture of phosphate fertilizers factory , from phosphate rock, which is very similar to the manufacture of cement.

Our range of supply

We are distinguished for supplying cement plants with equipment from leading global brands that meet the highest industry standards by converting rock to clinker in all stages from quarrying, crushing, screening and kilns to converting CaCO_3 to CaO (clinker) and then grinding and turning it into cement.

1) Quarrying Equipments

We supply explosives for quarries, rock extraction equipment and rock transportation which's includes:



- Air compressors and jack hammers for digging and boring

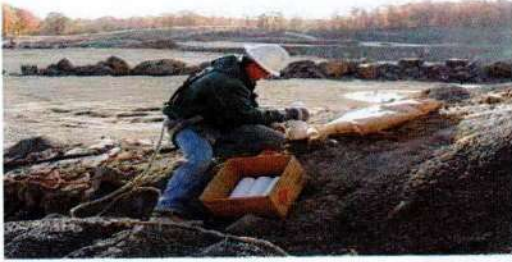


- Quarrying explosives

Office Address : # 2016, Metropolis tower, Business Bay, Dubai, United Arab Emirates
Shop Address : Next To Al Ras Hotel , Al Ras Deira , Dubai, United Arab Emirates
Tel: +97142580497 / +97143799927 Fax: +97142580498, Mob: +971547700750

Email : sales@hitechgt.ae / procurement@hitechgt.ae

www.hitechgtr.com



- (Crushing systems (jaw crusher, hammer mill, ball mill & Screening units).

We supply all types of (hammer and jaw mills and ball mills) and spare parts in addition to all types of sieves and their spare parts.



2) Cement rotary Kiln

We are distinguished by supplying all types of dry or wet kilns and their accessories, which are:

- Supply of kiln feeder for wet & dry process kiln.
- Supplying the fuel system for kilns, whether (gas, oil, or coal), including tanks, pumps, burner, nozzles, control and operation valves).
- Supply of dry & wet process dedusting system.
- Supplying lining materials, including (high, medium and low alumina bricks) and all kind of magnesite bricks)along with all kind of mortars.
- Supplying the main drive high voltage & low voltage motor & dedusting system for the kiln, whether wet or dry process.



3) Cement clinker milling

Office Address : # 2016, Metropolis tower, Business Bay, Dubai, United Arab Emirates

Shop Address : Next To Al Ras Hotel , Al Ras Deira , Dubai, United Arab Emirates

Tel: +97142580497 / +97143799927 Fax: +97142580498, Mob: +971547700750

Email : sales@hitechgt.ae / procurement@hitechgt.ae

www.hitechgtr.com



Clinker grinding and its conformity to international specifications, which are manufactured according to the type of ball mill, and the quality of the ball is the secret to obtaining the best types of cement, so we supply the ball mill and its accessories from the best assets in the world which includes: (ball mill - motor and its accessories, balls of various hardness and specifications, screen, Screw conveyor, dust removal system, electric motors and spare parts, electrical equipment and tools).



4) Lining material



To provide protection for the steel structure of rotary kilns with continuous production and conforming to international specifications is to provide protection for the structure of rotary kilns, using the best types of bricks, whether magnesium or aluminum and bear different temperatures, so we have committed to supplying the best of these types and from their good and known origins, which are

- **Magnesite Bricks**
- **Low alumina Bricks**
- **Medium alumina Bricks**
- **High alumina Bricks**
- **Anti-acid brick**
- **Anti-corrosion brick**
- **Mortar** (Low, Medium, High) alumina Mortar a ,Anti-acid brick & Mortar)
- Lining (Rubber, PVC, Teflon) Lining



Office Address : # 2016, Metropolis tower, Business Bay, Dubai, United Arab Emirates
 Shop Address : Next To Al Ras Hotel , Al Ras Deira , Dubai, United Arab Emirates
 Tel: +97142580497 / +97143799927 Fax: +97142580498, Mob: +971547700750

Email : sales@hitechgt.ae / procurement@hitechgt.ae

www.hitechgtr.com



5) Cement conveyers include (Belt, bucket, screw)conveyer .Main drum (motorized or normal),(steel or rubber) & Return idlers with Side seal and back seal).



One of the most important requirements of the cement industry is to provide the best way to transport raw materials between quarries and grinding and screening units, feeding them into rotary kilns, then to ball mills and finally to packing units for final production.

Therefore, we have committed ourselves to supplying conveyor belts from internationally known origin including conveyor package (anti-corrosion, anti-acid, heat-resistant, and high corrosion resistance). We can also provide welding and fastening materials and equipment for the belts.

With all its spare materials supplied, including the main drum, whether regular or motorized, with the supply of side idlers, and the return roller, whether rubber or iron.

We work with annual manufacturing contracts to manufacture and supply them according to international specifications.

We also supply the best types of bucket elevators and screw conveyors, including vertical or horizontal jacks, to handle hot, cold, soft and coarse materials while supplying all types of motors, gears, & spare part.

6. Cement filling and packaging

Office Address : # 2016, Metropolis tower, Business Bay, Dubai, United Arab Emirates
Shop Address : Next To Al Ras Hotel , Al Ras Deira , Dubai, United Arab Emirates
Tel: +97142580497 / +97143799927 Fax: +97142580498, Mob: +971547700750

Email : sales@hitechgt.ae / procurement@hitechgt.ae

www.hitechgtr.com





We provide a complete range of modern weighing and packing machines and packaging materials for cement filling, including cement paper bags of 50 kg, jumbo bags up to 1 ton, then a special packing system for packing cement into a tank for transporting cement.

We supply loading equipment, transportation equipment, trucks: heavy or light, sewing machines, expiration date printing machines, shrink packaging machine. We supply all kinds of packaging materials for the manufacture of paper bags for packing cement 50 kg, jumbo bags up to 1 ton, woven bags of 50 kg.

A.8 Cement additives

We supply all the equipment to add additives to the cement and change the specification of the cement to allow for anti-acid, anti-heat, anti-corrosion

- Feeder
- Hopper – with and without agitator
- Vibrator
- Screw conveyor
- De-dusting system
- Electrical equipment and instruments

7) Ready mix cement



We supply the equipment to make the cement ready for use. We start with the powder cement either loose or bagged, gravel, and water. All three need to be brought to one place, mixed and prepared for transport to the site.

- Cement transport equipment, with is either loose cement tankers or bagged cement trucks
- Gravel loading equipment like wheel loader, bulldozer, and fork lift
- Tipper trucks for gravel
- Gravel piling system including hopper, conveyer belt and stacker
- Mixing units for cement, gravel and water
- Water supply
- Cement track mixer

Office Address : # 2016, Metropolis tower, Business Bay, Dubai, United Arab Emirates

Shop Address : Next To Al Ras Hotel , Al Ras Deira , Dubai, United Arab Emirates

Tel: +97142580497 / +97143799927 Fax: +97142580498, Mob: +971547700750

Email : sales@hitechgt.ae / procurement@hitechgt.ae

www.hitechgtr.com



- Cement pump

8) Cement blocks, interlock and slab

We supply the production lines to produce hollow and solid cement **blocks**. These production lines can be automatic or semi-automatic with different capacity. The hollow blocks can have insulating material to insulate the building from heat of cold.

We also supply production lines for **interlock**, which can be automatic or semi-automatic, and they can produce interlock of different designs and colours.

We supply the production lines to produce concrete **slabs** of varying sizes and thickness depending on each project. The slabs support the construction industry's need for speed and reliability.

All three of these needs special transport equipment to move the finished pieces to the end user.

C.3 Cement transport

Cement in its powdered form is transported in three ways. They all share the same requirement for loading terminals with weighing scales, vacuum system, and air compressors, which we can supply; and the three systems require the following equipment, which we can supply:

Tanker



- Mobile tanker for loose cement with vacuum system and air compressors, and truck.

Train



- Cargo truck designed for loose cement
- Standard cargo trucks for bagged cement

Truck



9. General supplies

9.1 Instruments

Office Address : # 2016, Metropolis tower, Business Bay, Dubai, United Arab Emirates
 Shop Address : Next To Al Ras Hotel , Al Ras Deira , Dubai, United Arab Emirates
 Tel: +97142580497 / +97143799927 Fax: +97142580498, Mob: +971547700750



Email : sales@hitechgt.ae / procurement@hitechgt.ae

www.hitechgtr.com



The instruments that we supply cover the entire range of the processes in the cement industry. The instruments cover both the operating and maintenance of the plants.

- Gauges (level, pressure, vacuum and temperature),
- Transmitters (level, pressure and temperature)
- Limit switches (level, flow and load)
- Metering (turbine, positive displacements, rotameter, ultrasonic, vortex and electromagnetic)
- RTU/SCADA systems
- Natural Gas Automation
- Gas Flow Measurement
- Thermocouple
- Totalizer
- Electrical heater
- Vibration meter
- Tachometer
- Leakage detector
- Flow monitoring
- Data recording
- Process control equipment
- Cathodic protection with all accessories

We also supply the necessary software for analysis and interpretation of the results.

9.2 Steel fabrication

We manufacturer and fabricate tanks, hoppers, steel structures for the crushing and screening units, conveyor belts, pre-heating areas for raw materials, and filling areas for finished products.

Storage tanks:



Office Address : # 2016, Metropolis tower, Business Bay, Dubai, United Arab Emirates
 Shop Address : Next To Al Ras Hotel , Al Ras Deira , Dubai, United Arab Emirates
 Tel: +97142580497 / +97143799927 Fax: +97142580498, Mob: +971547700750

Email : sales@hitechgt.ae / procurement@hitechgt.ae

www.hitechgtr.com





We supply and manufacture

- Movable steel cement tank, sliding type, with different capacities to suit the needs of projects. All of our tanks contain the inspection facilities required for proper maintenance and cleaning.
- Suction system
- Scales
- Air compressors
- Cathodic protection
- Fire fighting system
- Cement and rock storage tanks are made of stainless steel or carbon steel and coated with rubber or any other material according to customer requirements and include lining materials such as rubber, Teflon, brick or mortar.
- A tank on a cement truck equipped with a vacuum system, an air compressor, and weights for dry products.

Cement loading

We manufacturer and supply the equipment for loading and unloading stations for cement, which include:

- Heavy loading equipment (quarrying truck, wheel loader, bulldozer, etc.)
- Train loading and unloading station including hopper, vibrator and conveyors
- Hopper with vibrators for loading and unloading trucks
- Loading and unloading platforms for jumbo bags
- Cement tanker loading systems
- Truck with a cement mixer
- Cement pump, both mobile and skid mounted

9.3 Motors, engine, and electrical materials

We supply a wide range of motors to the cement industry, as well as the rock and mineral crushing industry.

- Motors include high and low voltage, single and 3-phase, vertical and horizontal, as well as cooling and heating systems.
- Engines are operated by either diesel or fuel, and can be either air or water cooled.

Our motors include:

9.3.1 AC motors:



Office Address : # 2016, Metropolis tower, Business Bay, Dubai, United Arab Emirates
Shop Address : Next To Al Ras Hotel , Al Ras Deira , Dubai, United Arab Emirates
Tel: +97142580497 / +97143799927 Fax: +97142580498, Mob: +971547700750

Email : sales@hitechgt.ae / procurement@hitechgt.ae

www.hitechgtr.com



- High volta , low voltage motor, single phase, 3-phase
- AC servo motor Vertical and Horizontal.

9.3.2 DC motors:



- Brushless DC motors
- Liner DC motors
- DC servo motors

9.3.3 Engines



- Powered by diesel or fuel
- Skid or trailer mounted
- With sound proof shelters
- Water or air cooled

9.4 Electrical materials

Office Address : # 2016, Metropolis tower, Business Bay, Dubai, United Arab Emirates
 Shop Address : Next To Al Ras Hotel , Al Ras Deira , Dubai, United Arab Emirates
 Tel: +97142580497 / +97143799927 Fax: +97142580498, Mob: +971547700750

Email : sales@hitechgt.ae / procurement@hitechgt.ae

www.hitechtr.com





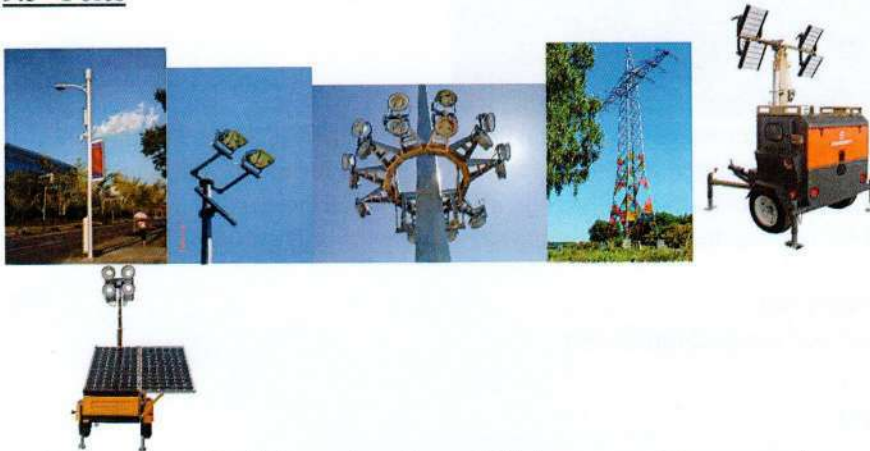
These materials have to meet varying requirement of operating outdoors and indoors

- Water proofing
- Heat resistance
- High voltage and low voltage

They include

- Electrical panel
- Switch gear
- Circuit breaker
- Relay

9.5 Poles



Lighting poles with different lengths and thicknesses, with accessories

- Lighting tower for low and high voltage with accessories

9.6 Transformer:



We can supply the transformers and oil required, and we can maintain for all kinds of transformers.

- Power, auto transformer
- Distribution transformer
- Current transformer
- Voltage transformer

Office Address : # 2016, Metropolis tower, Business Bay, Dubai, United Arab Emirates

Shop Address : Next To Al Ras Hotel , Al Ras Deira , Dubai, United Arab Emirates

Tel: +97142580497 / +97143799927 Fax: +97142580498, Mob: +971547700750

[Email : sales@hitechgt.ae](mailto:sales@hitechgt.ae) / procurement@hitechgt.ae

www.hitechgt.com



- Special transformer
- Solar transformer
- Automatic Voltage Regulators (AVR)

9.7 Cables



- High, Medium and Low voltage and fiber optic with all accessories.
- Aluminium, copper,
- Coated with PVC or plastic
- Reinforced with

9.10 Power generation plants



The cement industry requires continuous power especially in the kilns and if the power supply from the main source is interrupted, essential power is required for the kiln during heating before production, and cooling after production, and many other processes. We supply the equipment for continuous or essential power generation and power distribution.

Therefore we supply the following:

- Water, thermal, fuel and gas generation unit
- Solar energy system
- Wind energy system

Generator:



- Diesel engine water cooled mobile and skid mounted
- Diesel engine air cooled mobile and skid mounted
- Solar generator

9.11 Compressors (electrical and diesel engine)

Office Address : # 2016, Metropolis tower, Business Bay, Dubai, United Arab Emirates
 Shop Address : Next To Al Ras Hotel , Al Ras Deira , Dubai, United Arab Emirates
 Tel: +97142580497 / +97143799927 Fax: +97142580498, Mob: +971547700750



Email : sales@hitechgt.ae / procurement@hitechgt.ae

www.hitechtr.com



The compressors we supply to the cement industry need to be able to operate both outdoor and indoor, and be able to work in both high and low temperatures. These include compressors which can meet all the requirements of the cement industry such as operating the de-dusting and pneumatic systems, and special compressors for loading and unloading systems and tankers. The compressors need to be able to work in the most extreme environments like the desert, where there are cement factories and crushing plants. We also supply the necessary heaters and driers along with the compressors.

Our range includes:

- Mobile air compressor with diesel engine
- Mobile air compressor for quarrying with special hose and jack hammer
- Special compressor for loading and unloading systems and cement tankers
- Skid mounted air compressor with electrical motor high and low voltage for cement industry
- Air dryer

9.12 Workshop equipment

We specialise in workshop supply, both mobile and permanent.

Mobile workshops include those that operate on site for the cement and crushing industries, often used for temporary maintenance programmes. One example is the high pressure hose fixing workshop, and another that conducts mobile valve tests with all accessories including a hydrostatic test bench.

Permanent workshops vary from site to site, some very large with very sophisticated equipment, and others are much smaller devoted to routine maintenance. The crushers' bearings, hammers, balls, and jaws need a lot of maintenance, as do the screening units. The workshops also have to administer weekly, monthly, yearly schedules for maintenance.

The equipment we supply for these workshops include:

9.13 Welding equipment



Office Address : # 2016, Metropolis tower, Business Bay, Dubai, United Arab Emirates

Shop Address : Next To Al Ras Hotel , Al Ras Deira , Dubai, United Arab Emirates

Tel: +97142580497 / +97143799927 Fax: +97142580498, Mob: +971547700750

Email : sales@hitechgt.ae / procurement@hitechgt.ae

www.hitechgtr.com



9.14 Welding machine



Electrical welding machine with different capacities, both single and multi-machine:

- 3-phase
- single phase
- tractor type
- circular

9.15 Argon welding machine



9.16 Diesel welding machine (air cooled and water cooled engine)



17.9 Welding material

(Electrode ,Carbon steel welding (E6013 ,7018 ,6010,7010.... etc.),Stainless steel (304,308,316L.... etc.),Copper,Alloy ,Under water welding ,Under water cutting Electrode ,Wire

Argon wire)



- Welding electrode oven



- Welding electrode dryer

Office Address : # 2016, Metropolis tower, Business Bay, Dubai, United Arab Emirates
Shop Address : Next To Al Ras Hotel , Al Ras Deira , Dubai, United Arab Emirates
Tel: +97142580497 / +97143799927 Fax: +97142580498, Mob: +971547700750

Email : sales@hitechgt.ae / procurement@hitechgt.ae

www.hitechtr.com



- **Welding consumables:**Cable,Torch,Nozzle ,Holder,Glass,Gloves,Helmet
- Welding inspection material
 - ✓ X- ray inspection
 - ✓ Die penetration inspection material.

9.15 CNC machine



Lathe machine



Bending and beveling machine



Pipe bending machine



We supply pipe bending machines of all sizes and radius, that can handle different materials.

Pipe beveling machine

Pipe threading machine

Office Address : # 2016, Metropolis tower, Business Bay, Dubai, United Arab Emirates

Shop Address : Next To Al Ras Hotel , Al Ras Deira , Dubai, United Arab Emirates

Tel: +97142580497 / +97143799927 Fax: +97142580498, Mob: +971547700750

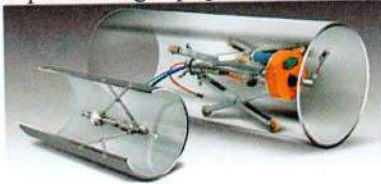
Email : sales@hitechgt.ae / procurement@hitechgt.ae

www.hitechgtr.com





- Pipe coating equipment



- Heat exchanger maintenance equipment
These include



- Tube cutter



- Tube puller



- Tube expander



- Steel bar bending and threading machine
The machines we supply can automatically feed, straighten, bend and cut all ranges of rebar.

Plate cutting and bending machine



We supply cutting and bending machines which handle all thickness and dimensions and materials such as carbon steel, alloy, stainless steel, copper, galvanized steel, etc.

9.16 Heavy equipment, truck and tanker

<p>Excavator</p>	<ul style="list-style-type: none"> • Wheel loader 	<ul style="list-style-type: none"> • Back hoe loader
<ul style="list-style-type: none"> • Fork lift 	<ul style="list-style-type: none"> • Tower and mobile crane 	<ul style="list-style-type: none"> • Heavy and light truck
<ul style="list-style-type: none"> • Fuel tanker 	<ul style="list-style-type: none"> • Chemical tanker 	<ul style="list-style-type: none"> • Foam tanker

Office Address : # 2016, Metropolis tower, Business Bay, Dubai, United Arab Emirates
 Shop Address : Next To Al Ras Hotel , Al Ras Deira , Dubai, United Arab Emirates
 Tel: +97142580497 / +97143799927 Fax: +97142580498, Mob: +971547700750



[Email : sales@hitechgt.ae](mailto:sales@hitechgt.ae) / procurement@hitechgt.ae

www.hitechgt.com

		 
• Bitumen tanker 	• Fire-fighting Water tanker 	

Our range of supply includes the whole range of heavy equipment for the cement industry, including quarrying, loading, transport, unloading, crushing and screening.

- Excavator
- Wheel loader
- Back hoe loader
- Bulldozer
- Side boom
- Fork lift
- Tower and mobile crane
- Heavy and light truck
- Tipper truck
- Cement tanker
- Fuel tanker
- Fire-fighting water tanker
- Foam tanker
- Bus
- Pick-up

9.17 Personal Protection Equipment (PPE) and fire systems

We can supply the entire range fire protection systems for the cement and crushing industries, and we are used to operating to the very high standards of protection that these industries require. We also supply specialised personal safety clothing for all aspects of work.

Personal clothing and equipment

Office Address : # 2016, Metropolis tower, Business Bay, Dubai, United Arab Emirates
Shop Address : Next To Al Ras Hotel , Al Ras Deira , Dubai, United Arab Emirates
Tel: +97142580497 / +97143799927 Fax: +97142580498, Mob: +971547700750

Email : sales@hitechgt.ae / procurement@hitechgt.ae

www.hitechgtr.com



- Complete head and body protection
- Survival suits
- Overalls
- Gloves
- High-viz vests
- Safety boots and shoes
- Gas masks
- Helmets
- Protection glasses
- Ear protectors
- Breathing masks to protect against dust, etc.

9.20 Firefighting systems and equipment



- Fire-fighting water pumps with electrical and diesel motor
- Foam systems
- Fire extinguishers
- Fire-fighting vehicles and equipment
- Fire alarm systems
- Explosion proof alarm
- Signal, control and communications equipment
- Re-breathing systems
- Safety equipment for hazardous areas
- Gas and safety monitoring and control
- Portable multi-gas detector
- Smoke detector

Office Address : # 2016, Metropolis tower, Business Bay, Dubai, United Arab Emirates

Shop Address : Next To Al Ras Hotel , Al Ras Deira , Dubai, United Arab Emirates

Tel: +97142580497 / +97143799927 Fax: +97142580498, Mob: +971547700750

Email : sales@hitechgt.ae / procurement@hitechgt.ae

www.hitechgtr.com



- Nitrogen gas detector
- Leakage detector
- Hoses
- Nozzles

9.21 Testing and Laboratory Equipment

Our range of supply (Fire-fighting water pumps with electrical and diesel motor ,Foam systems, Fire extinguishers, Fire-fighting vehicles and equipment, Fire alarm systems. Explosion proof alarm, Signal, control and communications equipment, Re-breathing systems ,Safety equipment for hazardous areas, Gas and safety monitoring and control, Portable multi-gas detector, Smoke detector, Nitrogen gas detector ,Leakage detector ,Hoses, Nozzles)



Our range of products includes instruments and equipment for cement and crushing companies, to cover all the chemical and physical tests required for rock and the finished products.

Our portfolio includes:

- Rock testing devices
- Soil testing devices
- Spectrometer
- Cement and concrete testing devices
- PH meter
- Thermometer
- Stirring, shaking, mixing and separating systems
- Chemical test instruments

Office Address : # 2016, Metropolis tower, Business Bay, Dubai, United Arab Emirates
Shop Address : Next To Al Ras Hotel , Al Ras Deira , Dubai, United Arab Emirates
Tel: +97142580497 / +97143799927 Fax: +97142580498, Mob: +971547700750

[Email : sales@hitechgt.ae](mailto:sales@hitechgt.ae) / procurement@hitechgt.ae

www.hitechgtr.com



- Mineral test instruments
- Radiation test instruments

9.22 Chemical materials



Our range of chemical materials supports the cement industry. We supply the chemicals needed to change the specifications of the cement from ordinary cement to other anti-acid, anti-corrosion, anti-thermal and special cement for drilling for water or oil. And the chemicals to treat industrial waste water.

Chemical materials we supply include:

- **Caustic soda**
- **Soda ash**
- **Corrosion inhibiton**

For water and cleaning agents:

- Ethylene diamine tetra acetic acid (EDDA)
- Tetra sodium Pyrophosphate ($\text{Na}_4\text{P}_2\text{O}_7$)
- Sodium Tri polyphosphate ($\text{Na}_5\text{P}_3\text{O}_{10}$)
- Sodium tetra polyphosphate ($\text{Na}_6\text{P}_4\text{O}_{13}$)
- Proteolytic Enzymes
- Lipolytic Enzymes
- Sodium Ortho silicate ($2\text{Na}_2\text{SiO}_2 \cdot 5\text{H}_2\text{O}$)
- Met sodium meta silicate ($\text{Na}_2\text{SiO}_3 \cdot 5\text{H}_2\text{O}$)
- Borax
- Methyl
- Ethyl
- Lactic acid
- Alkyl aryl sulphonate (Dodecyl benzene sulphonate)
- Cat-ionic surfactants
- Non-ionic surfactants

9.23 De-dusting and filtration

Office Address : # 2016, Metropolis tower, Business Bay, Dubai, United Arab Emirates

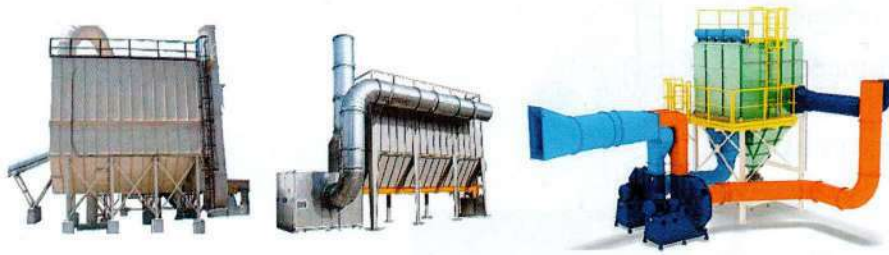
Shop Address : Next To Al Ras Hotel , Al Ras Deira , Dubai, United Arab Emirates

Tel: +97142580497 / +97143799927 Fax: +97142580498, Mob: +971547700750

Email : sales@hitechgt.ae / procurement@hitechgt.ae

www.hitechgtr.com





Dealing with dust is a significant part of the cement industry.

- The quarrying, crushing and screening of the rock to be ready for the kiln, requires the **dry filtering** system including the shaking, and filter bags.
- The kiln creates hot dust, which has to be dealt with through the **wet de-dusting** process.
- Grinding the clinker, adding the additives, and packaging creates dust, which has to be dealt with through the **dry de-dusting** system.

We supply

- All equipment for all kinds of filter that clean the rock, clinker, and cement to make them ready for use.
- De-dusting systems that are vital to keep all equipment running and avoid corrosion, blockage and breakdown.

We supply equipment for both wet and dry de-dusting systems:

- Wet process needs complete systems including fans, water tanks, water pumps, nozzles and cyclone, etc.
- Dry process needs complete systems including filter bag, wire mesh along with a shaking system, with specifications varying on specific purpose

9.24 Inspection and measuring equipment

We supply for inspection, measuring and calibrating all kinds of equipment, including weighing scales, vibrators, tanks, coolers, heat exchangers, boilers, kilns, pipes, turbines, engines and machinery.

For example, we supply the equipment to measure the thickness of the **kiln** shell and lining material, and check for cracks. The pre-heating areas needs the same checks, for which we supply the equipment. For **pipelines** for water delivery for the industry or human consumption, we inspect and supply the equipment to test the thickness, find cracks, measure inner scale, flow, integrity of welding joints, and hydrostatic inspection for all kinds of valves whether in the pipeline or pumping stations.

We supply equipment to inspect the insulation, plate thickness, cracks, and sludge inside **tanks** for fuel supply and de-dusting systems, and to inspect the outer and inner insulation or

Office Address : # 2016, Metropolis tower, Business Bay, Dubai, United Arab Emirates

Shop Address : Next To Al Ras Hotel , Al Ras Deira , Dubai, United Arab Emirates

Tel: +97142580497 / +97143799927 Fax: +97142580498, Mob: +971547700750

Email : sales@hitechgt.ae / procurement@hitechgt.ae

www.hitechgtr.com



coating. For **heat-exchangers** we supply the equipment and inspect for the maintenance and repair to either damage in the shell or blockage in the tube.

9.25 Petroleum products

Through our sister company Gold Vision Diesel Trading we can supply oil products used for burning in the kilns, and for essential power stations generators, and for steam generators used for heating and other purposes. Gold Vision can also supply all kinds of lubricants used for industrial and transportation purposes, along with hydraulic oil for hydraulic coupling and transformers.

Our range of products includes:

- Fuel oil



- Diesel



- Gas



- Lubricant
- Engine oil for petrol and diesel
- Hydraulic oil for hydraulic coupling and transformer

10 Common supplies of equipment

10.1 Pumps

Office Address : # 2016, Metropolis tower, Business Bay, Dubai, United Arab Emirates
Shop Address : Next To Al Ras Hotel , Al Ras Deira , Dubai, United Arab Emirates
Tel: +97142580497 / +97143799927 Fax: +97142580498, Mob: +971547700750



[Email : sales@hitechgt.ae](mailto:sales@hitechgt.ae) / procurement@hitechgt.ae

www.hitechgtr.com



We have a very wide range of vertical, horizontal, or deep well pumps, which can be multistage and single stage, which we supply along with diesel engine or electrical motor high and low voltage operated by air or solar. The pumps come mobile or skid-mounted with sound proof shelter:

- centrifugal
- reciprocating
- self-priming
- submersible for sewage and clear water and deep well
- booster
- dosing
- metering
- radial, axial, and mixed flow
- adductor-jet
- gravity
- valve-less
- vacuum
- gear
- piston

Our range of activities covers the following industries: cement, metallic and non-metallic minerals, water (drilling and treatment), oil and gas, chemical and petrochemical, fertilizer (with a special pump for urea and phosphoric acid), power production and distribution, food processing and packaging.

The material of the pumps that we supply cover all the customers' activities, so we can supply pumps of stainless steel, carbon steel, PVC, rubber lined; and coated with rubber, Teflon or PVC.

Sizes start from half an inch up to one meter, and larger on occasion if the customer requires different capacities.

Our pumps operate in all conditions. For cold areas we offer steam jackets with different insulation, and other pumps that work in very hot temperatures.

Office Address : # 2016, Metropolis tower, Business Bay, Dubai, United Arab Emirates

Shop Address : Next To Al Ras Hotel , Al Ras Deira , Dubai, United Arab Emirates

Tel: +97142580497 / +97143799927 Fax: +97142580498, Mob: +971547700750

Email : sales@hitechgt.ae / procurement@hitechgt.ae

www.hitechgt.com



Every industry and each specific purpose requires variations in the pumps, with different materials for the pumps' impeller, casing and shaft.

10.2 Engine and motor

Pumps are driven by diesel or petrol engine, electrical AC or DC motor, or air. Increasingly electrical pumps are powered by solar power.

- **Diesel and petrol engine:** Air or and water cooled. Mobile and skid mounted.

Picture of pump with engine

- **Electrical motor:** High and low voltage motor. Vertical or horizontal.



- **Solar panel:** Pump driven by solar power with different capacities

Picture of pump with solar panel

- **Air pump:** Compressors and all accessories



E.1.2 Spare parts for pump

All our pumps are supplied with full spare parts and maintenance

Mechanical seal



- Rubber mechanical seal
- Teflon mechanical seal
- Anti-acid mechanical seal
- Thermal mechanical seal
- Double side mechanical seal

Office Address : # 2016, Metropolis tower, Business Bay, Dubai, United Arab Emirates

Shop Address : Next To Al Ras Hotel , Al Ras Deira , Dubai, United Arab Emirates

Tel: +97142580497 / +97143799927 Fax: +97142580498, Mob: +971547700750

Email : sales@hitechgt.ae / procurement@hitechgt.ae

www.hitechgtr.com

Gland packing

- Teflon
- Graphite

Impeller

Open and closed type

Shaft

- Carbon steel
- Stainless steel
- Alloy steel
- Copper

Coupling and belt

- Mechanical
- Hydraulic
- V-Belt
- Driven belt between motor, engine and pump

E.2 Pipes, clamps, pigs, hoses and nozzles

Our dedicated years' experience of supplying pipes to a wide range of industries have given us the knowledge to understand our customers' needs. We have worked in the following industries: cement, metallic and non-metallic minerals (mining and processing), water (drilling and treatment), oil and gas, chemical and petrochemical, fertilizer, power production and distribution, food processing and packaging.

We supply a wide range of pipes including

- seamless
- ERW
- SSW
- alloy steel

Office Address : # 2016, Metropolis tower, Business Bay, Dubai, United Arab Emirates

Shop Address : Next To Al Ras Hotel , Al Ras Deira , Dubai, United Arab Emirates

Tel: +97142580497 / +97143799927 Fax: +97142580498, Mob: +971547700750

Email : sales@hitechgt.ae / procurement@hitechgt.ae

www.hitechtr.com





- casing pipe for water and oil wells
- screens for water well
- cold drawn
- cold work
- galvanized pipe
- ductile pipe
- cement pipe
- precast concrete
- reinforced concrete
- GRP
- PVC lined corrosion-resistant reinforced
- pipes for pile support in bridge construction and underwater

We also handle all kinds of

- tubes – all kinds for boiler and heat exchangers
- pipes - for water networks
- pipes - for all kinds of domestic and commercial use.

According to the industry requirements, the pipes are manufactured in different materials including carbon steel, stainless steel, galvanized steel, brass, aluminum, alloy, copper, ductile iron, as well as pipes coated with rubber, Teflon, and PVC.

The pipes are either threaded or beveled with coupling.
The sizes range from 1 inch all the way up to 56 inches.

10.3 Clamps



We have many years' experience in supplying pipes to government entities and private sector companies, which has given us ample opportunity to supply both internal and external clamps to pipeline contractors.

- Hydraulic Internal clamp
- External clamp

10.4 Pigs

Office Address : # 2016, Metropolis tower, Business Bay, Dubai, United Arab Emirates
Shop Address : Next To Al Ras Hotel , Al Ras Deira , Dubai, United Arab Emirates
Tel: +97142580497 / +97143799927 Fax: +97142580498, Mob: +971547700750

[Email : sales@hitechgt.ae](mailto:sales@hitechgt.ae) / procurement@hitechgt.ae

www.hitechgtr.com





We supply all kinds pigs including steel and foam, which are used for drying, cleaning, batching, and product removal operations, in industries including cement, metallic and non-metallic minerals, oil and gas, municipality, food and beverage, mining, chemical and petrochemical, cosmetic and pharmaceutical industries.

The sizes of the steel and foam pigs range from one inch to 60 inches.

Foam pigs are able to negotiate uncommon piping, fittings and valves, with industry standard densities of foam ranging from 2, 5, 8-pound per cubic foot. Configurations include bare, criss-cross, wire brush, plastic bristle, and silicon carbide with various design option such as double dish, double nose, special coating patterns (single-spiral, turning pattern, totally coated, etc.). These all come in various lengths and diameters, with pulling /handling ropes or cables, bypass jets, and transmitter cavities. Special configurations can be designed for unique pigging applications.

We supply the following types of pig:

- Bare foam
- Coated foam
- Plastic bristle foam
- Silicon carbide foam
- Special design foam
- Foam wiping
- Brush foam
- Foam spheres

10.5 Hoses and Nozzles



We supply a wide range of hoses and nozzles as required by the industries listed above, and their many different functions and pressures, with different materials such as Low-density polyethylene (LDPE), Polytetrafluoroethylene (PTFE), Rubber reinforced by stainless steel, and hoses coated with corrosion and acid resistant material according to the customer's needs.

In addition, our staff can visit sites and prepare industry-specific hoses to fit and connect according the sites' requirements.

E.3 Valves

Office Address : # 2016, Metropolis tower, Business Bay, Dubai, United Arab Emirates

Shop Address : Next To Al Ras Hotel , Al Ras Deira , Dubai, United Arab Emirates

Tel: +97142580497 / +97143799927 Fax: +97142580498, Mob: +971547700750

Email : sales@hitechgt.ae / procurement@hitechgt.ae

www.hitechgt.com





Our distinguished experience in supplying what is compatible with the requirements of customers and for many years in supplying valves to the following industries:

- 1- Special valves in industries (cement, metallic and non-metallic minerals, oil and gas, chemical and petrochemical industries, fertilizers industry (with valves for urea and phosphoric acid), water valves (drilling and processing) and food industries,
- 2- It is the type of flange, threaded or welded.
- 3- They include valves that are operated manually, by an electric motor, or hydraulic or pneumatically.
- 4- Which are made of stainless steel, carbon steel, galvanized steel, copper, aluminum, copper, alloys, and some valves lined with rubber or coated with rubber, Teflon or PVC.
- 5- And with sizes from 1 inch to 56 inch.
- 5- The pressure is from 150 pounds to 6000 pounds per square inch.
- 6- We have a mobile workshop for valve maintenance, hydrostatic testing, safety valve calibration and control which's include:

- 1) **Ball** (floating, trunnion ball, full weld body, top entry, side entry)
- 2) **Check valve** (wafer type, dual plate, swing, tilting, renewable seat)
- 3) **Butterfly valve** (flexible wedge and solid wedge)
- 4) **Gate valve** (lubricate, non-lubricated and taper)
- 5) **Choke valve**
- 6) **Solenoid valve**
- 7) **Globe valve**



- 8) **Plug valve**
- 9) **Safety valve**
- 10) **Control valve**
- 11) **Non-return valve**

Office Address : # 2016, Metropolis tower, Business Bay, Dubai, United Arab Emirates

Shop Address : Next To Al Ras Hotel , Al Ras Deira , Dubai, United Arab Emirates

Tel: +97142580497 / +97143799927 Fax: +97142580498, Mob: +971547700750

Email : sales@hitechgt.ae / procurement@hitechgt.ae

www.hitechgtr.com



- 12) Moisture drain valve
13) Rubber coated valve



- 14) Teflon coated valve
15) Rubber lined valve
16) PVC valve



E.4 Fitting, Joints, Fastening and Sealing:

Office Address : # 2016, Metropolis tower, Business Bay, Dubai, United Arab Emirates

Shop Address : Next To Al Ras Hotel , Al Ras Deira , Dubai, United Arab Emirates

Tel: +97142580497 / +97143799927 Fax: +97142580498, Mob: +971547700750

Email : sales@hitechgt.ae / procurement@hitechgt.ae

www.hitechgtr.com





We supply flanges, tee, elbow, cross, cap, plug, nipple, unions, spacer, reducer, socket, gaskets, bolts and nuts, O-ring, rod as well as adhesive and different sealing tags including electronic tags.

We cover the following industries: cement, metallic and non-metallic minerals (mining and processing), water (drilling and treatment), oil and gas, chemical and petrochemical, fertilizer (with a special valve for urea and phosphoric acid), power production and distribution, food processing and packaging.

The materials for the fittings that we supply to all the above sectors include stainless steel, carbon steel, galvanized steel, brass, aluminum, rubber and alloy for special use.

The size varies from 1 inch to 56 inch according to requirements.

The rate flow varies from 150 psi up to 6000 psi.

- 1) Flange:
- 2) Ring joint type
- 3) Weld neck
- 4) Flat face
- 5) Raised face



Office Address : # 2016, Metropolis tower, Business Bay, Dubai, United Arab Emirates

Shop Address : Next To Al Ras Hotel , Al Ras Deira , Dubai, United Arab Emirates

Tel: +97142580497 / +97143799927 Fax: +97142580498, Mob: +971547700750

Email : sales@hitechgt.ae / procurement@hitechgt.ae

www.hitechgtr.com

- 6) Orifice
- 7) Tee
- 8) Elbow
- 9) Cross
- 10) Cap
- 11) Plug Nipple



- 12) Unions
- 13) Spacer
- 14) Reducer
- 15) Socket



Office Address : # 2016, Metropolis tower, Business Bay, Dubai, United Arab Emirates
Shop Address : Next To Al Ras Hotel , Al Ras Deira , Dubai, United Arab Emirates
Tel: +97142580497 / +97143799927 Fax: +97142580498, Mob: +971547700750

[Email : sales@hitechgt.ae](mailto:sales@hitechgt.ae) / procurement@hitechgt.ae

www.hitechgt.com



- 16) Gaskets
- 17) Spiral wound
- 18) Double metal jacket



- 19) Bolts and nuts
- 20) Bolts
- 21) Stud bolts
- 22) Nuts
- 23) O-ring
- 24) Rod – threaded and non-threaded



- 25) Steel
- 26) Rod – threaded and non-threaded
- 27) Teflon
- 28) Metal
- 29) Metal (carbon steel, stainless steel, alloy and copper)
- 30) Adhesive

Office Address : # 2016, Metropolis tower, Business Bay, Dubai, United Arab Emirates
Shop Address : Next To Al Ras Hotel , Al Ras Deira , Dubai, United Arab Emirates
Tel: +97142580497 / +97143799927 Fax: +97142580498, Mob: +971547700750

[Email : sales@hitechgt.ae](mailto:sales@hitechgt.ae) / procurement@hitechgt.ae

www.hitechgt.com





- 31) Sealing tag
- 32) E- lock standard
- 33) Alert lock
- 34) GPS Detector



Regards!

HITECH GENERAL TRADING LLC

Business Bay Dubai, United Arab Emirates

Mobile:- 00971-505598330 / 00971-547700750 00971-549973191 / 00971-549973192

Tel: 00971- 45710057 / 00971-4-2580497

Email : sales@hitechgt.ae / hitechgt2012@yahoo.ocm / md@alrakygroup.com

Web: www.hitechgt.com

Office Address : # 2016, Metropolis tower, Business Bay, Dubai, United Arab Emirates

Shop Address : Next To Al Ras Hotel , Al Ras Deira , Dubai, United Arab Emirates

Tel: +97142580497 / +97143799927 Fax: +97142580498, Mob: +971547700750

[Email : sales@hitechgt.ae](mailto:sales@hitechgt.ae) / procurement@hitechgt.ae

www.hitechgt.com

