



Our products

- Minerals

HITECH GENERAL TRADING LLC COMPANY PROFILE



BOOK NOW



+971 549973191 +971 547700750



www.hitechgtr.com



HITECH GENERAL TRADING LLC

Hitech is a leading provider of advanced equipment and technology solutions specifically designed for the minerals and metals industry. Our comprehensive range of products includes state-of-the-art machinery, tools, and systems that enhance the efficiency and productivity of mining, processing, and refining operations.

Dubai,UAE

Baghdad,Iraq

+971 549973191 +971 547700750

www.hitechgtr.com

procurement@hitechgtr.com sales@hitechgtr.com



MINERAL INDUSTRY EQUIPMENT

Hitech is a premier provider of advanced and comprehensive equipment specifically designed for the mineral industry. Our wide array of products caters to the varied needs of different sectors within the industry, ensuring optimal performance and efficiency. In addition to our top-quality equipment, Hitech specializes in managing mineral supply services, delivering a seamless and integrated approach to sourcing, logistics, and distribution. Our expertise in both equipment supply and supply chain management enables us to assist our clients in maximizing productivity, minimizing operational costs, and improving overall project outcomes. With a strong commitment to innovation and customer satisfaction, Hitech strives to be a reliable partner in the mineral industry, helping businesses succeed in a competitive environment.



Copper



Silver



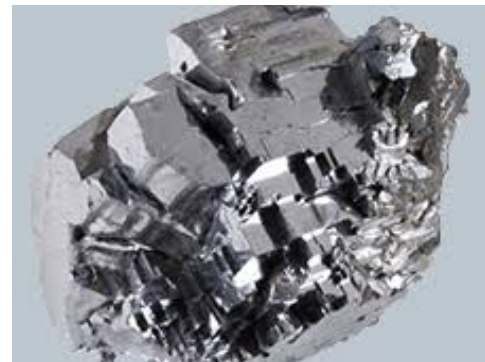
Iron



Zinc



Gold



Lead

Mineral Mining Equipment

Hitech is a leading provider of advanced mining equipment specifically designed for the mineral industry. The company specializes in manufacturing and supplying a wide range of high-quality machinery and tools that enhance the efficiency and productivity of mining operations. Their product offerings include excavators, drill rigs, crushers, and conveyor systems, all engineered to meet the rigorous demands of mineral extraction and processing.



Wheel Loader



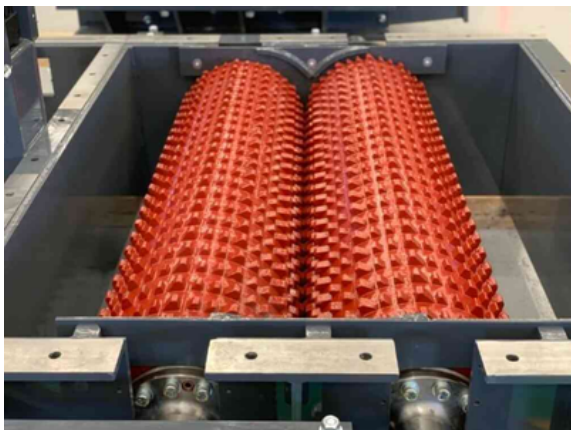
Dragline



Excavator



Bulldozer



Crusher



Continuous Miners



Conveyor Belt



Grinding Mills

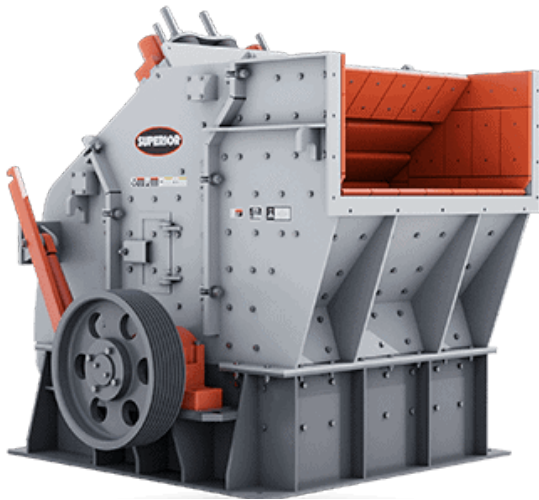
CRUSHER



Jaw Crusher



Cone Crusher



Impact Crusher



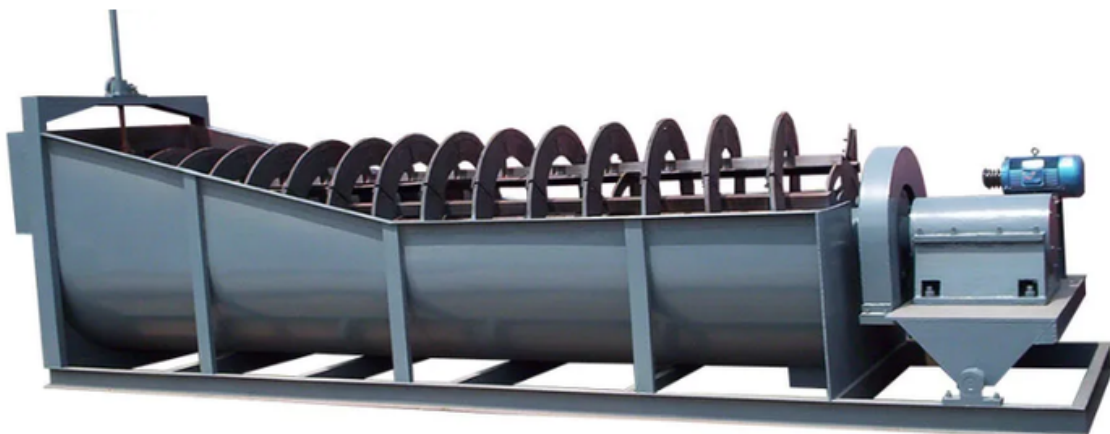
Hammer Crusher

MILLING EQUIPMENT



Ball Mill

SPIRAL CLASSIFIER



Spiral Classifier

MAGNETIC SEPARATOR



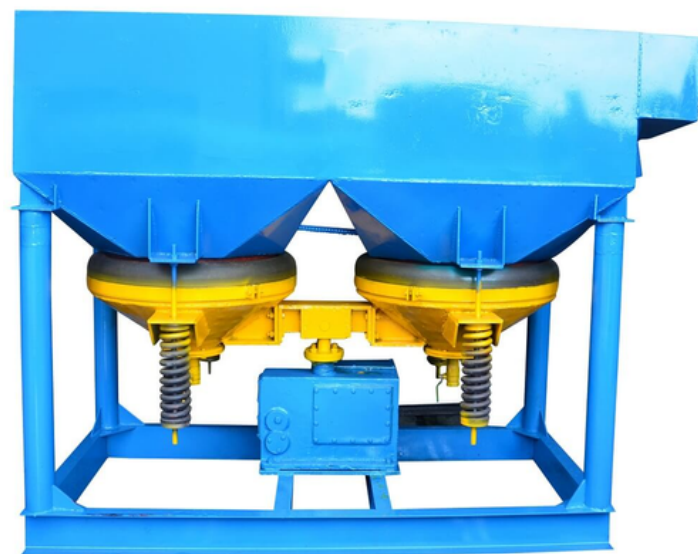
Wet & Dry Magnetic Separator



High Gradient Magnetic Separator

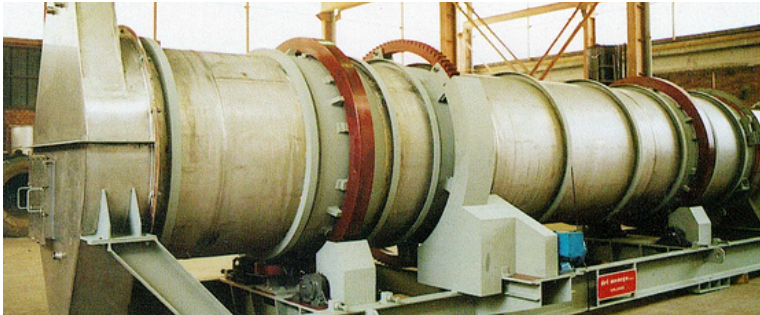


Flotation Machine



Jig Oil Concentrator

THERMAL PROCESSING



Rotary Dryer



Rotary Kiln

INDUSTRIAL SLURRY PUMP



SOLID / LIQUID SEPARATION EQUIPMENT



Filter Press



Industrial Centrifuge

GOLD & MINERAL SEPERATION

Trust us for all your mining equipment needs, as we specialize in supplying a range of Gold and Mineral Separation Equipment at Hitech General Trading LLC. Our offerings include Sluice boxes, Metal detectors, Trommels, High bankers, and Drywashers. Additionally, we provide Gold mining equipment such as Dredging machines, Wash Plants, Rock crushers, and Mineral separators.



Gold mining wash plant



Gold Ore Gravity Sperator



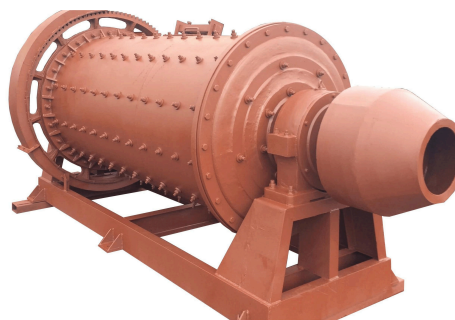
Ore & Mineral Separation Equipment



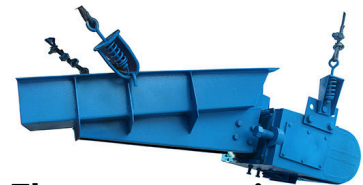
Shaking Table



Spiral Classifier



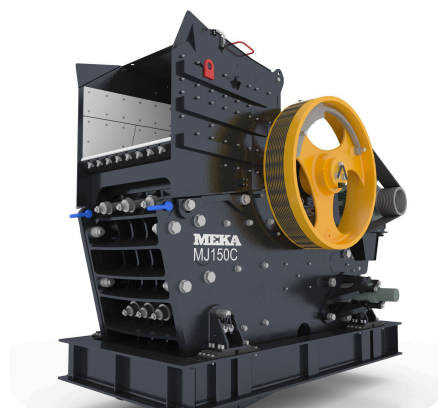
Ball Mill



Electromagnetic Vibrator Feeder



Gold Detector



Jaw Crusher



Gold Melting Furnace



Manual Ground Balance VLF



Automatic Ground Balance VLF



Pulse Induction Detector



3D Detector



Electromagnetic Gold Detector

SUPPLY OF MINERALS

Hitech offers a comprehensive range of products and minerals that are used in many industries, including sulfuric acid industry, by supplying sulfur with different types: Sulfur powder, Sulfur granular, Sulfur foam, silica sand, river sand, artificial sand, gypsum sand, coarse sand, and mixed carbonate silicate sand which are used in the glass, ceramics and other related industries. We also supply all types of clay materials for drilling oil wells, including barite, bentonite, kaolin, etc., in addition to raw iron, zinc, tin, and many other minerals.



River Sand



Pit Sand



Concrete Sand



Coarse sand



Artificial Sand



Desert Sand



Plastering Sand



Silica Sand



Carbonate Silica Sand



Sulphur Granules



Sulphur Sticks



Sulphur Tablets



Sulphur powder



Raw Sulphur

DRILLING MUD/FLUID MATERIALS



Barite



Bentonite Clay Powder



Kaolinite Clay



Viscosifier



Lignosulfonates



Mica powder

Consultancy & Training for Exploration & Production of Minerals.

Hitech is a leading consultancy firm that specializes in the intricate fields of mineral extraction and supply chain management. Our expertise lies in offering comprehensive support to mining companies at every stage of their operations. In the realm of exploration, we assist clients in identifying and evaluating potential mineral deposits, utilising advanced geological analysis and cutting-edge technology to ensure accurate assessments.

Our team of experienced geologists and industry experts work closely with clients to develop strategic exploration plans that maximize resource discovery while minimising environmental impact. When it comes to production processes, Hitech provides invaluable guidance in optimising mining operations. We analyze existing workflows, implement best practices, and introduce innovative technologies to enhance efficiency and productivity. Our focus on safety and sustainability ensures that our clients not only meet regulatory requirements but also adopt responsible mining practices that benefit both their operations and the communities in which they operate.

In addition to exploration and production, Hitech offers a wide range of services that encompass various aspects of the mining industry. This includes supply chain management, where we help clients streamline their logistics, procurement, and distribution processes to reduce costs and improve overall performance. Our expertise in market analysis and demand forecasting enables mining companies to make informed decisions regarding inventory management and resource allocation.



WE ARE ISO CERTIFIED

Certificate of Registration 

This is to certify that the Environmental Management System of

HITECH GENERAL TRADING LLC
 Site-1: Office#1, Al Qusais Industrial Area 4, Dubai, UAE
 Site-2: Al Sadoon -Al Karada, Baghdad, Iraq

is in accordance with the requirements of the following standard

ISO 14001:2015
 (Environmental Management System)

SCOPE
 Pumps, Engines, Valves & Spare Parts Trading
 Oilfield & Natural Gas Equipment & Spare Parts Trading
 Inspection & Testing Equipment Trading
 Blast Furnaces & Smelters Trading
 Well Drilling Equipment Trading
 Chemical Material Trading
 General Trading

Certificate Number : xxxxxxxxxx
 (IAF Code: 29)

Initial Registration Date : xx-xxxx-xxxx
 1st Surveillance Date : xx-xxxx-xxxx
 2nd Surveillance Date : xx-xxxx-xxxx
 Certificate Expiry Date : xx-xxxx-xxxx

To verify certificate, visit at :
www.arscert.com
www.uafaccreditation.org
www.lafcertsearch.org

Issued by ARS Assessment Private Limited

Managing Director 

 
 UAF Address : 400, North Center Dr. STE 202, Norfolk, VA 23502, United States of America

This certificate remains the property of ARS and must be returned to ARS on Cancellation or Suspension of the certificate. Validity of the certificate is subject to successful completion of surveillance audits. Further verification required by the holder of this certificate and the applicability of standard may be obtained by consulting the Organization or info@arscert.com

ISO 14001:2015

Certificate of Registration 

This is to certify that the Quality Management System of

HITECH GENERAL TRADING LLC
 Site-1: Office#1, Al Qusais Industrial Area 4, Dubai, UAE
 Site-2: Al Sadoon -Al Karada, Baghdad, Iraq

is in accordance with the requirements of the following standard

ISO 9001:2015
 (Quality Management System)

SCOPE
 Pumps, Engines, Valves & Spare Parts Trading
 Oilfield & Natural Gas Equipment & Spare Parts Trading
 Inspection & Testing Equipment Trading
 Blast Furnaces & Smelters Trading
 Well Drilling Equipment Trading
 Chemical Material Trading
 General Trading

Certificate Number : xxxxxxxxxx
 (IAF Code: 29)

Initial Registration Date : xx-xxxx-xxxx
 1st Surveillance Date : xx-xxxx-xxxx
 2nd Surveillance Date : xx-xxxx-xxxx
 Certificate Expiry Date : xx-xxxx-xxxx

To verify certificate, visit at :
www.arscert.com
www.uafaccreditation.org
www.lafcertsearch.org

Issued by ARS Assessment Private Limited

Managing Director 

 
 UAF Address : 400, North Center Dr. STE 202, Norfolk, VA 23502, United States of America

This certificate remains the property of ARS and must be returned to ARS on Cancellation or Suspension of the certificate. Validity of the certificate is subject to successful completion of surveillance audits. Further verification required by the holder of this certificate and the applicability of standard may be obtained by consulting the Organization or info@arscert.com

ISO 9001:2015

Certificate of Registration 

This is to certify that the Occupational Health and Safety Management System of

HITECH GENERAL TRADING LLC
 Site-1: Office#1, Al Qusais Industrial Area 4, Dubai, UAE
 Site-2: Al Sadoon -Al Karada, Baghdad, Iraq

is in accordance with the requirements of the following standard

ISO 45001:2018
 (Occupational Health and Safety Management System)

SCOPE
 Pumps, Engines, Valves & Spare Parts Trading
 Oilfield & Natural Gas Equipment & Spare Parts Trading
 Inspection & Testing Equipment Trading
 Blast Furnaces & Smelters Trading
 Well Drilling Equipment Trading
 Chemical Material Trading
 General Trading

Certificate Number : xxxxxxxxxx
 (IAF Code: 29)

Initial Registration Date : xx-xxxx-xxxx
 1st Surveillance Date : xx-xxxx-xxxx
 2nd Surveillance Date : xx-xxxx-xxxx
 Certificate Expiry Date : xx-xxxx-xxxx

To verify certificate, visit at :
www.arscert.com
www.uafaccreditation.org
www.lafcertsearch.org

Issued by ARS Assessment Private Limited

Managing Director 

 
 UAF Address : 400, North Center Dr. STE 202, Norfolk, VA 23502, United States of America

This certificate remains the property of ARS and must be returned to ARS on Cancellation or Suspension of the certificate. Validity of the certificate is subject to successful completion of surveillance audits. Further verification required by the holder of this certificate and the applicability of standard may be obtained by consulting the Organization or info@arscert.com

ISO 45001:2018



LOCATIONS - DUBAI,IRAQ



OUR CLIENTS



CONTACT US



WEBSITE
www.hitechgtr.com



+971 549973191



+971 549973192



+971 549973190



+971 547700750



+971-4-5461770



EMAIL US

procurement@hitechgtr.com
sales@hitechgtr.com

